



# NEWSLETTER



# ACFE

Association of Certified Fraud Examiners

Central Ohio Chapter

October/November 2019

[centralohiocfe.com](http://centralohiocfe.com)

[linkedin.com/groups/90120](https://www.linkedin.com/groups/90120)

## COST OF FRAUD CAMPAIGN

Starting Monday, September 30th our chapter will have 7 billboards up across Franklin County, Ohio as part of our Cost of Fraud public awareness campaign. We will also have additional digital billboards up during fraud awareness week.



Be sure to check out our campaign website at [COSTofFRAUD.com](http://COSTofFRAUD.com).

Also, follow us on Facebook, Twitter, Instagram and LinkedIn with the handle [centralohiocfe](https://www.facebook.com/centralohiocfe) and the hashtag [#COSTofFRAUD](https://twitter.com/COSTofFRAUD). Participate in the campaign by interacting with posts and posting with the [#COSTofFRAUD](https://twitter.com/COSTofFRAUD) hashtag.



## PRESIDENT'S MESSAGE

Thank you to everyone who joined us for our September 9th *Anti-Fraud Analytics Workshop* presented by Steve Hittle!

We hope to see you at our *Big Consequence Training* Event on November 12th. Come hear from a convicted fraudster about the fraud he committed and the Big Consequences for his life. The insights we can hear from a convicted fraudster can help us learn how to better prevent, detect, and investigate fraud. This event will likely sell out, so please register early!

## CHAPTER LEADERSHIP

**President:** James Rumph, Nationwide

**Vice President:** Danny Case, AEP Services Corporation

**Secretary:** Melissa Butsko, JPMorgan Chase

**Treasurer:** Nate Radabaugh, Nationwide

### Board Members at Large:

David Dennis, Consulting

Daniel Herb, Nationwide

Yufei Mao, L Brands

Chuck Pierano

**President Emeritus:** Melissa Smart, Huntington National Bank

## UPCOMING EVENTS: (SEE WEBSITE FOR DETAILS)

**November 12, 2019:**

*Big Consequences Training Event*, convicted fraudster and author **Jerome Mayne** and Franklin County Economic Crime Unit Assistant Prosecuting Attorney **Thomas Allen**; 9 to noon (3 CPE hours); The Ohio State University (OSU) Fawcett Center

**January 14 and March 10, 2020 :**

Topics TBD, OSU Fawcett Center

**May 18 - 19, 2020:**

*20th Annual Emerging Trends in Fraud Investigation & Prevention Conference*; Columbus Convention Center

- Keynote speaker: Theresa Payton, industry leading cyber security expert

# ANNOUNCEMENTS

## New Chapter Members

### Aug

- Arlen Dolly (Huntington National Bank)
- Nicole Keener (Nationwide)
- Mary Matusz (US Bank)
- Ashley Simmons (DSW)
- William Warrick (Oracle)

### Sept

- Mindy Baughman (US Bank)
- Averil Best (US Bank)
- Jonathan Krug (US Bank)

## New CFEs

### Aug

- Rebecca Shatto (JPMorgan Chase)

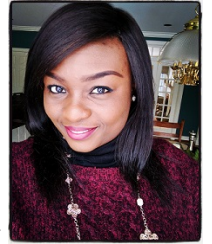
## Kindway EMARK Silent Auction

During our November 12th *Big Consequences Training Event*, our chapter will be hosting a silent auction. All proceeds will go to Kindway's EMBARK offender reentry program that works with men and women returning to Central Ohio from prison. Offenders receive guidance and support as they navigate their journey from incarceration to independence.

We will have CFE Exam Prep Courses, ACFE merchandise, and more available for this auction. If you have any items you would like to donate for this auction, please contact David Dennis at davidkdennis1@gmail.com.

# MEMBER SPOTLIGHT

**Nkeiruka Schmunk, CFE | Huntington National Bank | Quality Control Specialist - Financial Intelligence Unit**



**Q. Tell us about your current role?**

A. Over the past 5 years I've investigated fraud and money laundering crimes in the banking sector. I've been working as an AML Quality Control Specialist for over 1 year. In my current role my responsibilities are to oversee the quality of the investigations conducted by our Financial Intelligence Unit and ensure the investigations are carried out according to policies and procedures of the BSA (Bank Secrecy Act).

**Q. How long have you been a CFE and member of the Central Ohio ACFE Chapter?**

A. I've been a CFE since March 2014 and a Chapter member since January 2019.

**Q. What do you like best about being an ACFE member?**

A. Being a part of the ACFE has provided me with a tremendous wealth of knowledge and resources to draw upon as I perform my job responsibilities and advance within my career. It has also provided opportunities to network with professionals who specialize in their own areas of expertise.

**Q. Looking back at your success throughout your career, what is the best advice you can share with others?**

A. It's vitally important to find a mentor who has a wide array of experience to assist you in growing and advancing your career.

**Q. What accomplishments are you most proud of?**

A. Personally, I find it to be extremely rewarding to be a new mom. Professionally, I've found that the effort and time that went into achieving the CFE credential has made all the difference in my career.

**Q. What do you like to do for fun?**

A. I enjoy taking family vacations and exploring new places.

**Q. What is a fun fact about you?**

A. I love to sing when nobody is listening. LOL

## CAREER OPPORTUNITIES AND RECOGNITION

Chapter members can find and post career opportunities and post recognition for fellow chapter members within our chapter LinkedIn group: [linkedin.com/groups/90120](https://www.linkedin.com/groups/90120).

## THANK YOU 2019 EMERGING TRENDS SPONSORS!

